

DELTA VFD-L

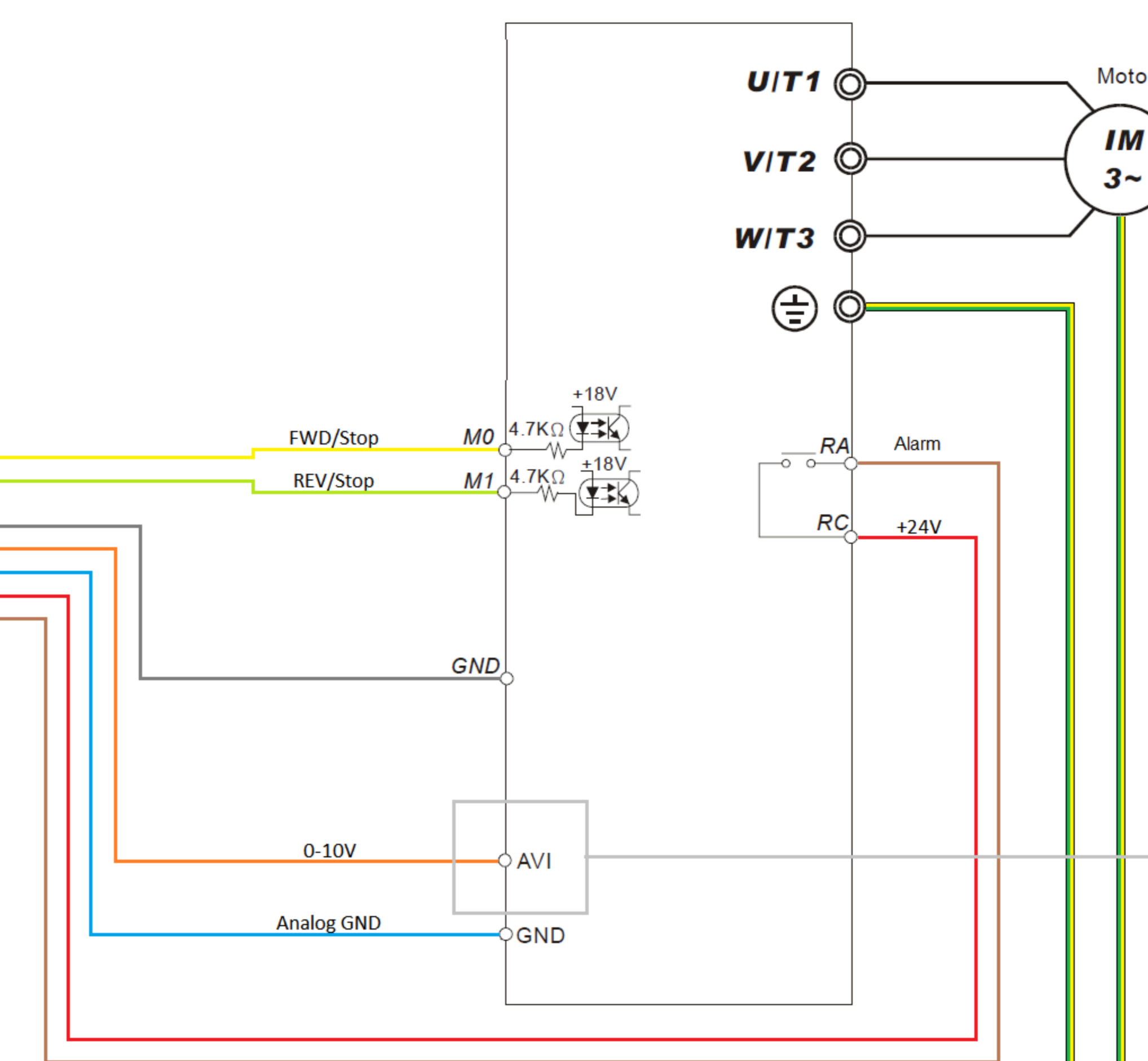
CSMIO/IP-M

4.3 Digital inputs connector	
PIN number	Description
1	0 (+) Input
2	1 (+) Input
3	2 (+) Input
4	3 (+) Input
5	4 (+) Input
6	5 (+) Input
7	6 (+) Input
8	7 (+) Input
9	8 (+) Input
10	9 (+) Input
11	10 (+) Input
12	11 (+) Input
13	GND
14	0 (-) Input
15	1 (-) Input
16	2 (-) Input
17	3 (-) Input
18	4 (-) Input
19	5 (-) Input
20	6 (-) Input
21	7 (-) Input
22	8 (-) Input
23	9 (-) Input
24	10 (-) Input
25	11 (-) Input

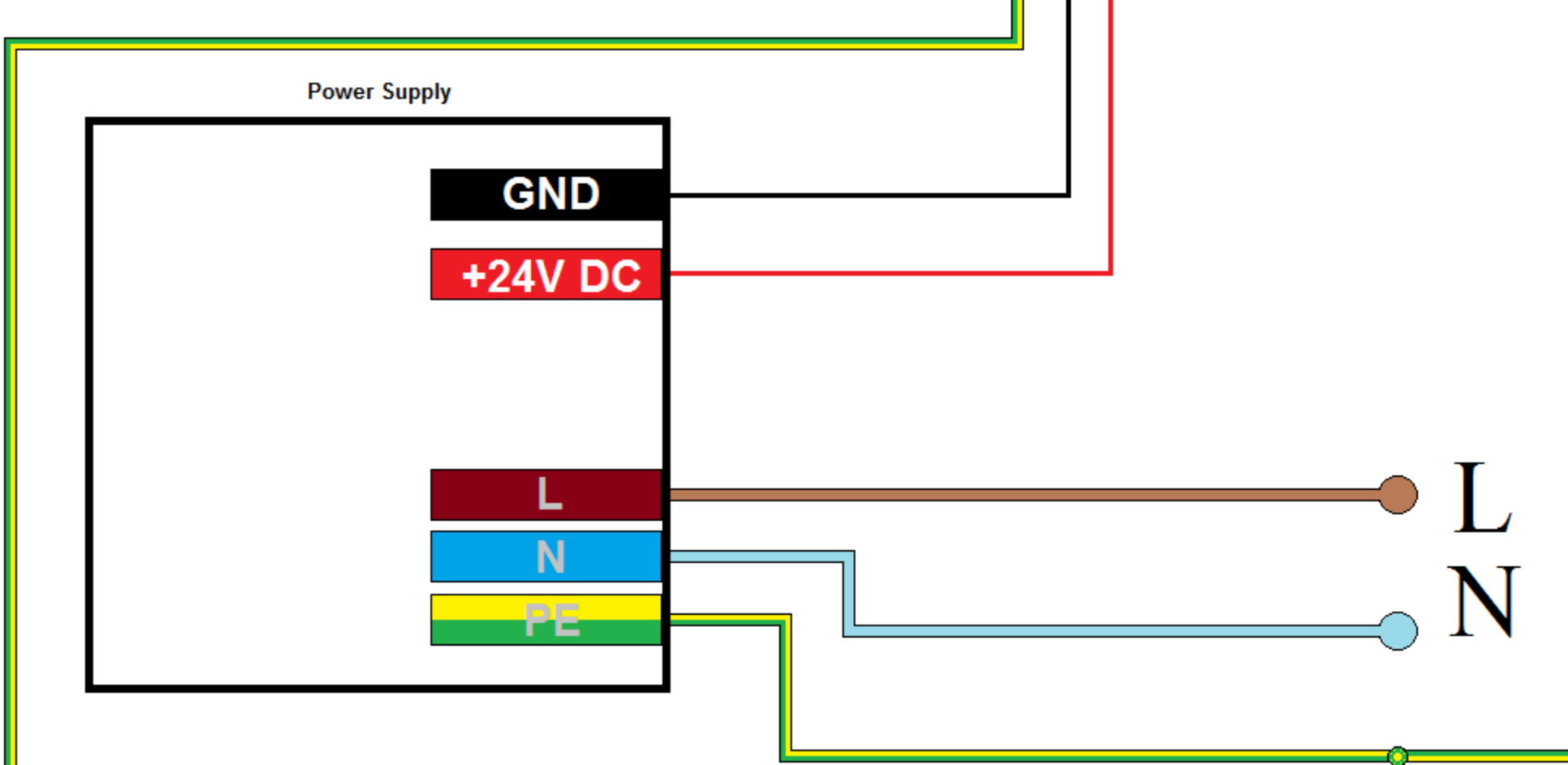
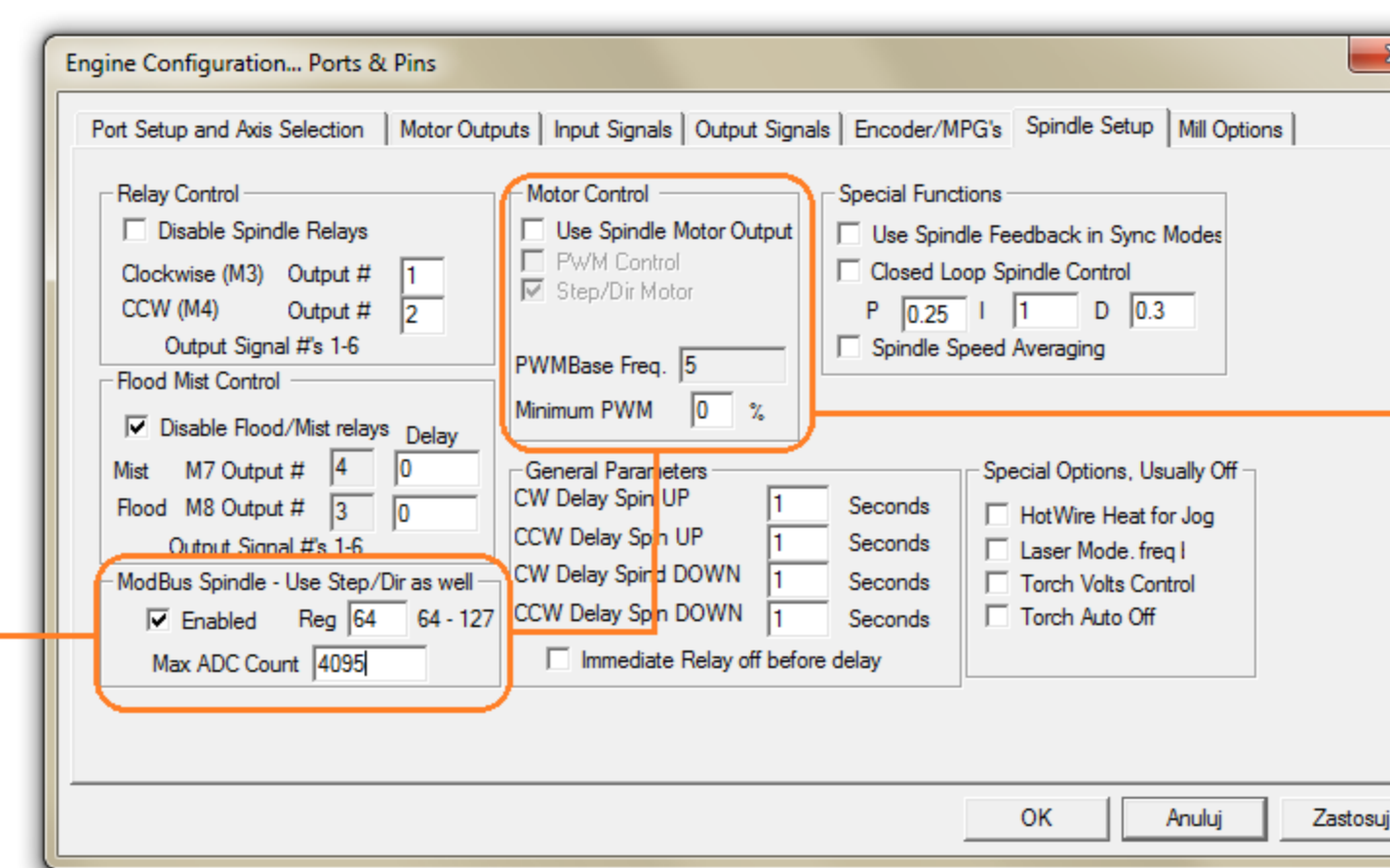
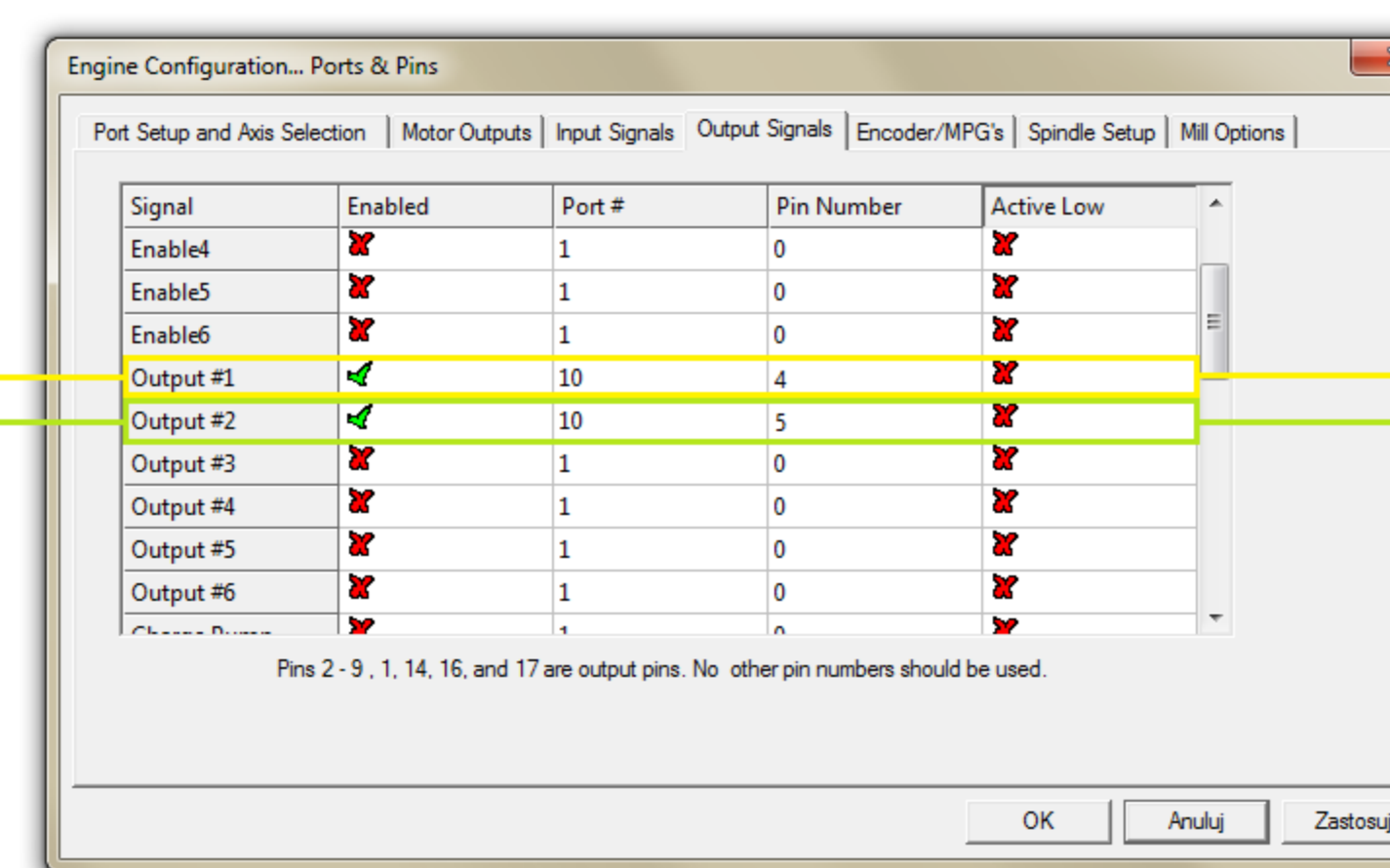
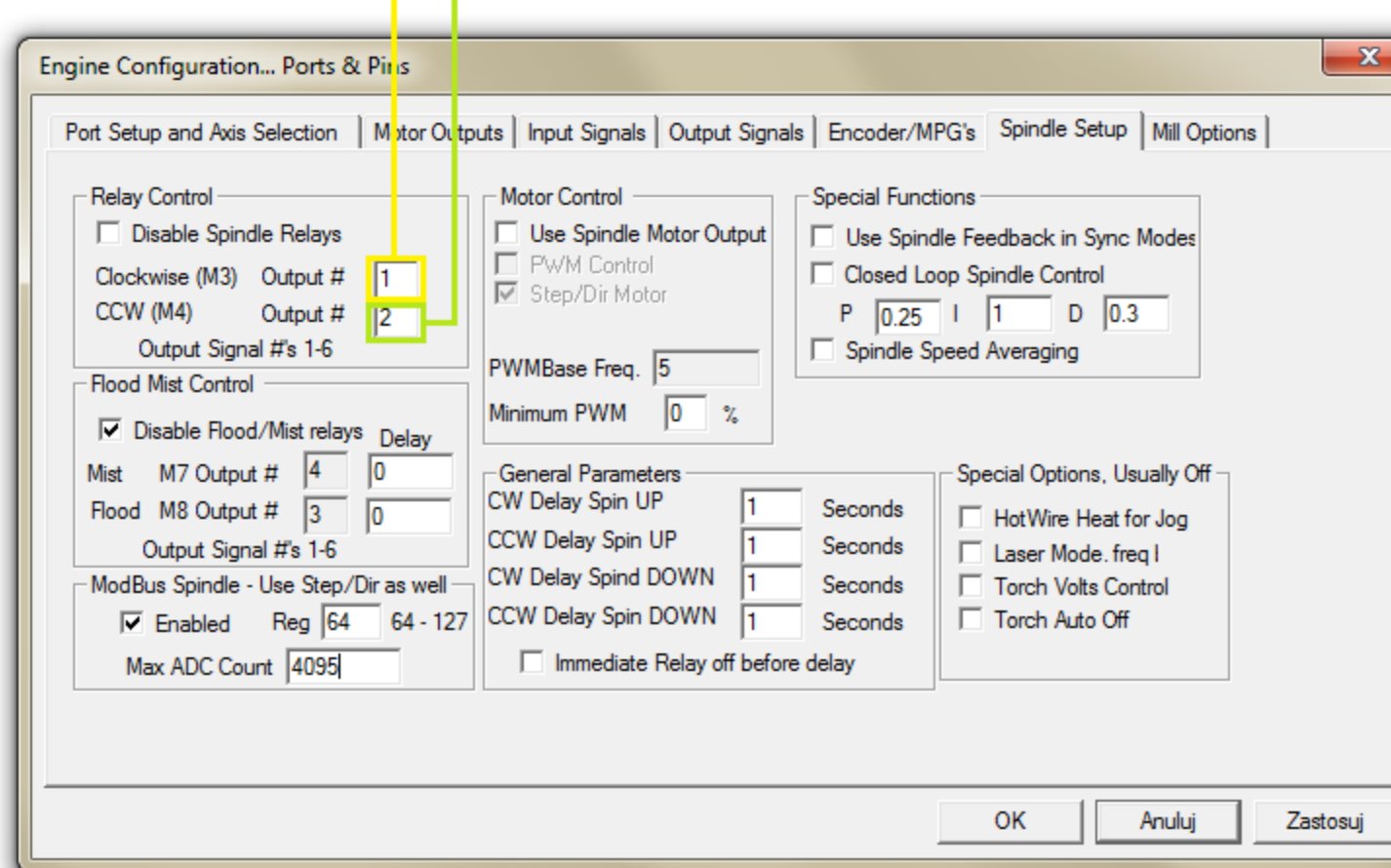
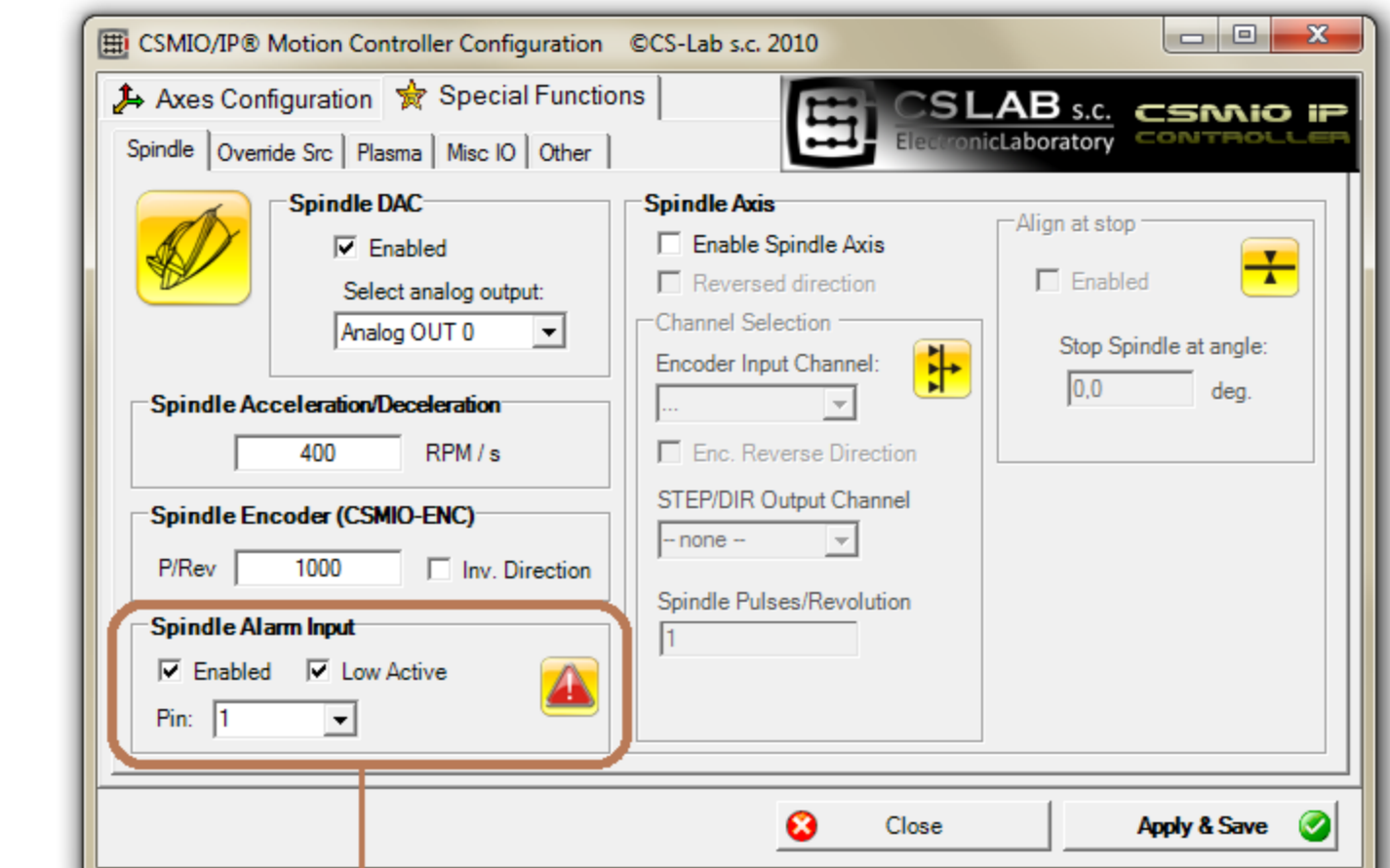
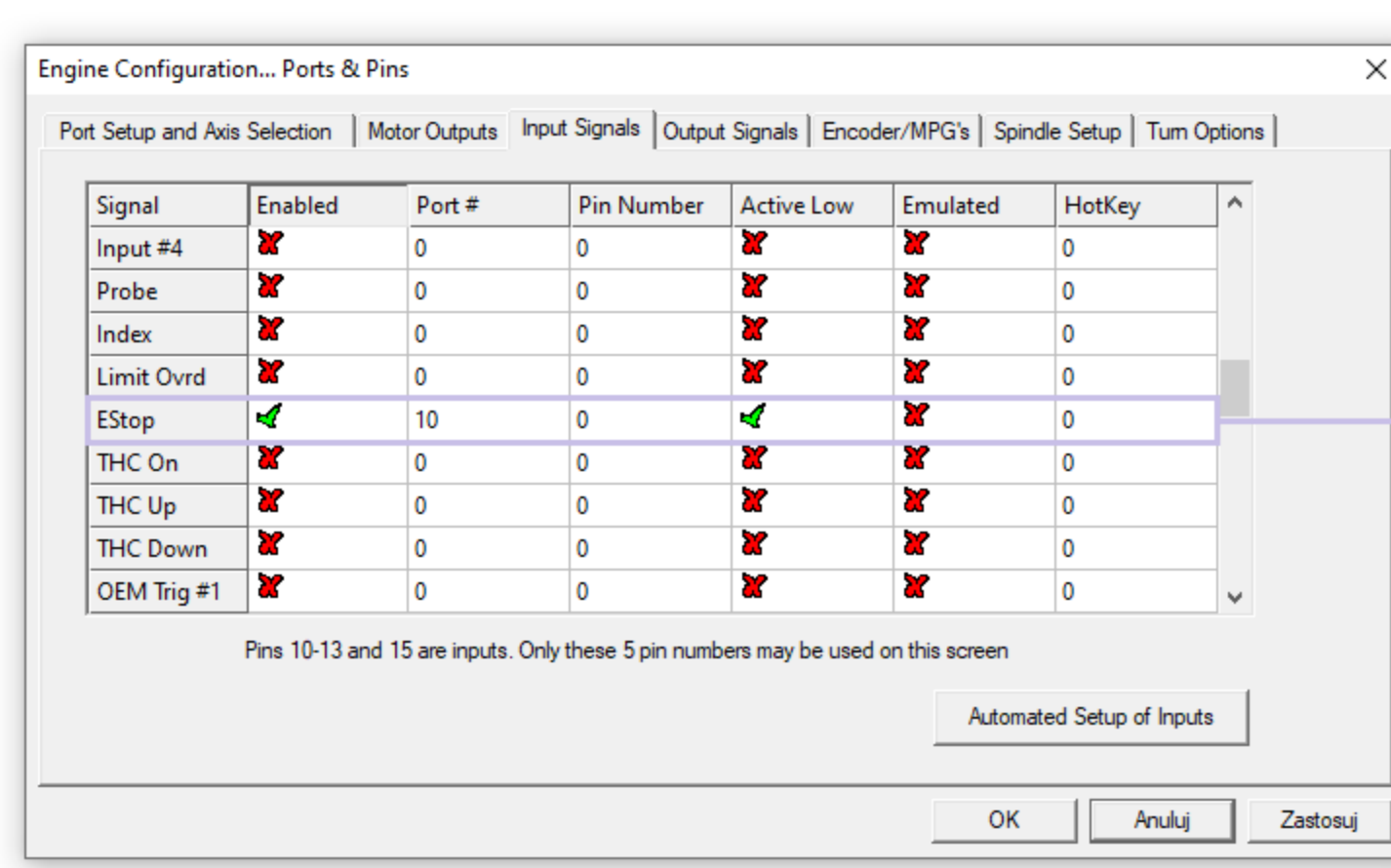
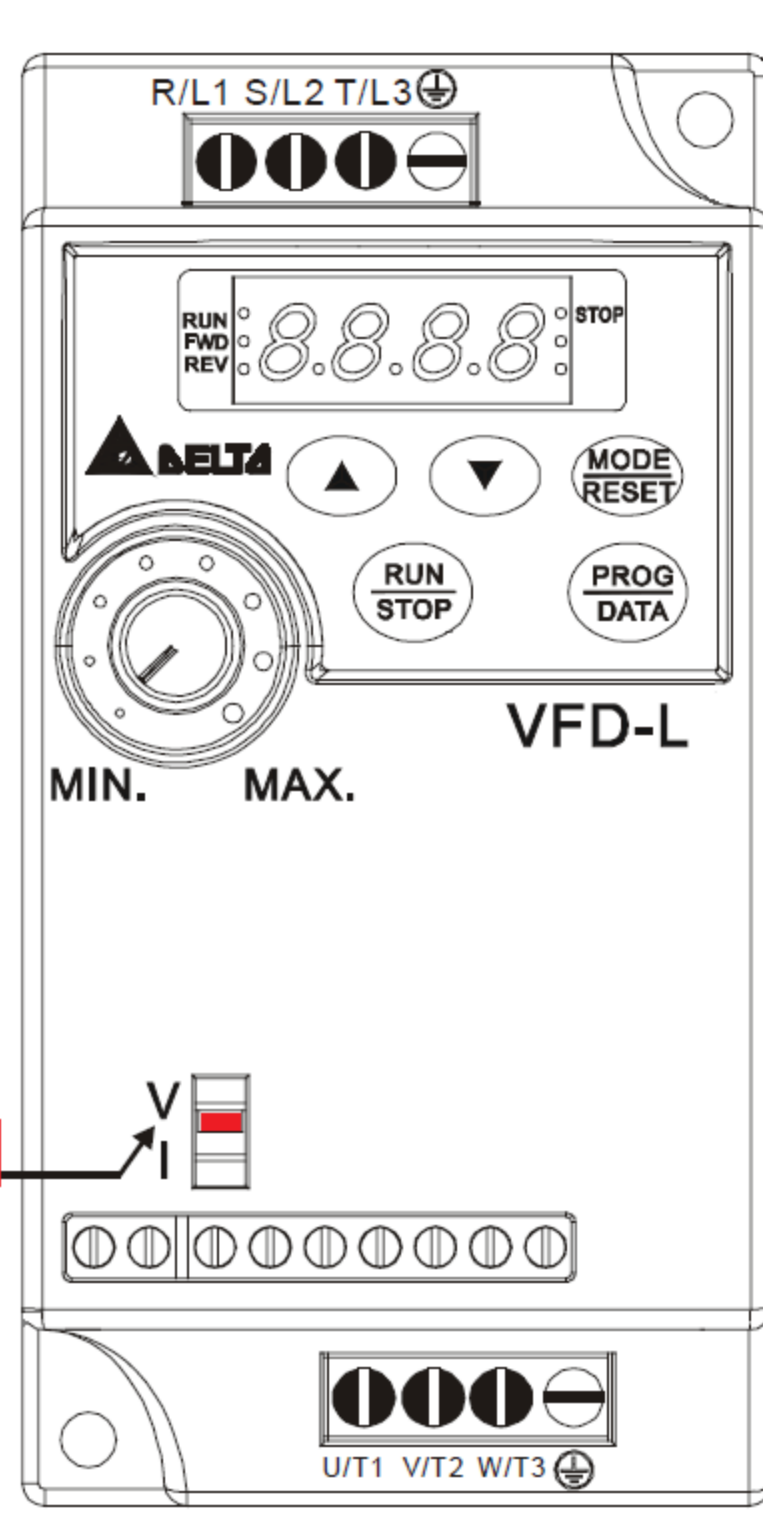
4.2 STEP/DIR controlling signals and digital outputs connector	
PIN number	Description
1	DIR[0]-
2	STEP[0]+
3	DIR[1]+
4	STEP[1]+
5	DIR[2]+
6	STEP[2]+
7	DIR[3]-
8	STEP[3]+
9	24V power supply for 0.3 outputs
10	Output 0
11	Output 2
12	Output 4 (NO1 relays)
13	Output 5 (NO2 relays)
14	DIR[0]-
15	STEP[0]+
16	DIR[1]+
17	STEP[1]-
18	DIR[2]-
19	STEP[2]-
20	DIR[3]-
21	STEP[3]-
22	0V power supply for 0.3 outputs
23	Output 1
24	Output 3
25	Common PIN for relay outputs 4 and 5

4.4 Analog I/O connector	
PIN number	Description
1	Analog output 0
2	GND
3	Analog input 1
4	-
5	10V (max. 50mA)
6	Analog output 1
7	Analog input 0
8	GND
9	-

4.6 Power connector	
PIN number	Description
1	Power -24V DC
2	GND
3	ground



The signal selection for AVI to input DC0~+10V or 4~20 mA



Earth
Listwa uziemiająca

Mach3