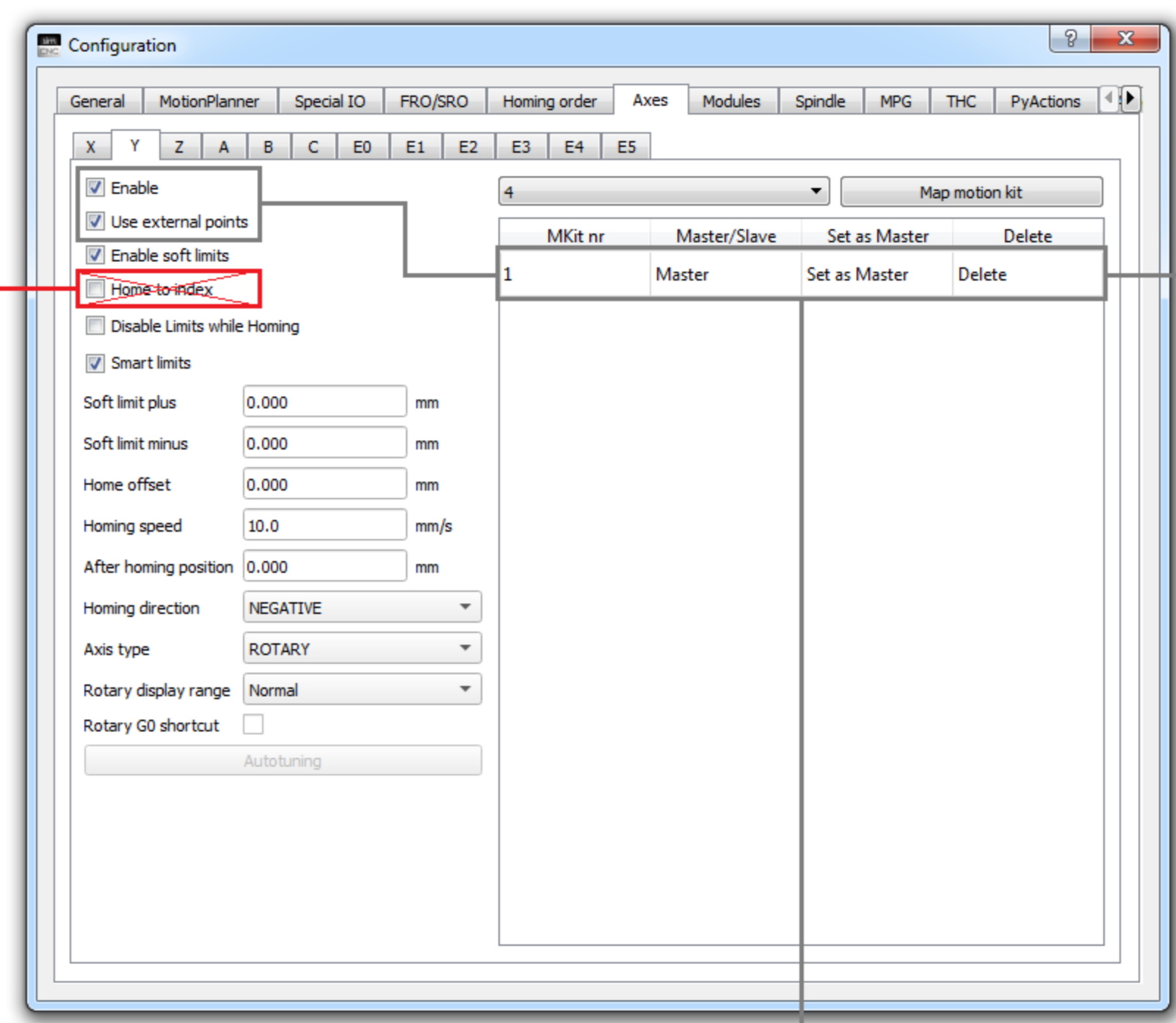
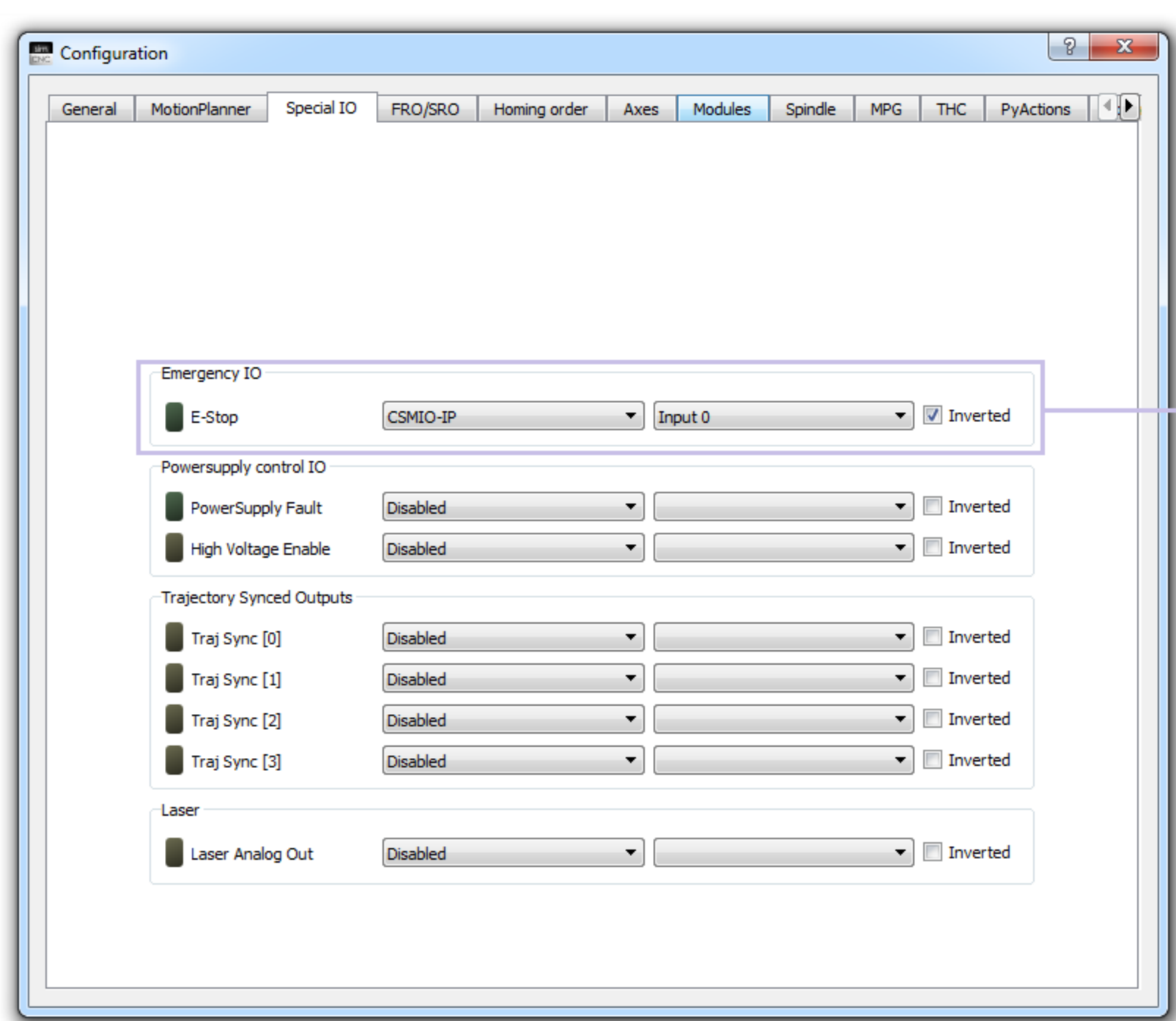
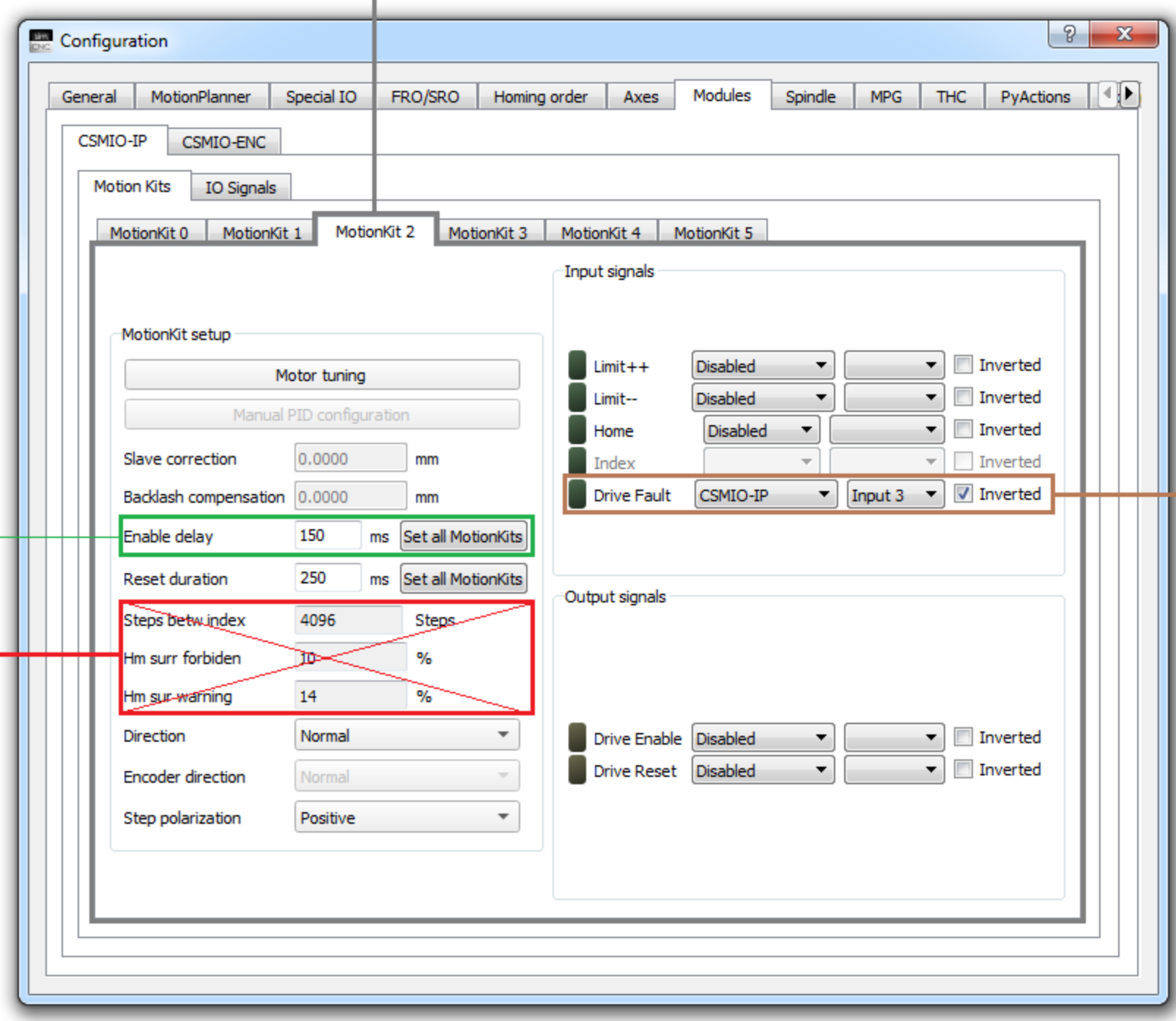
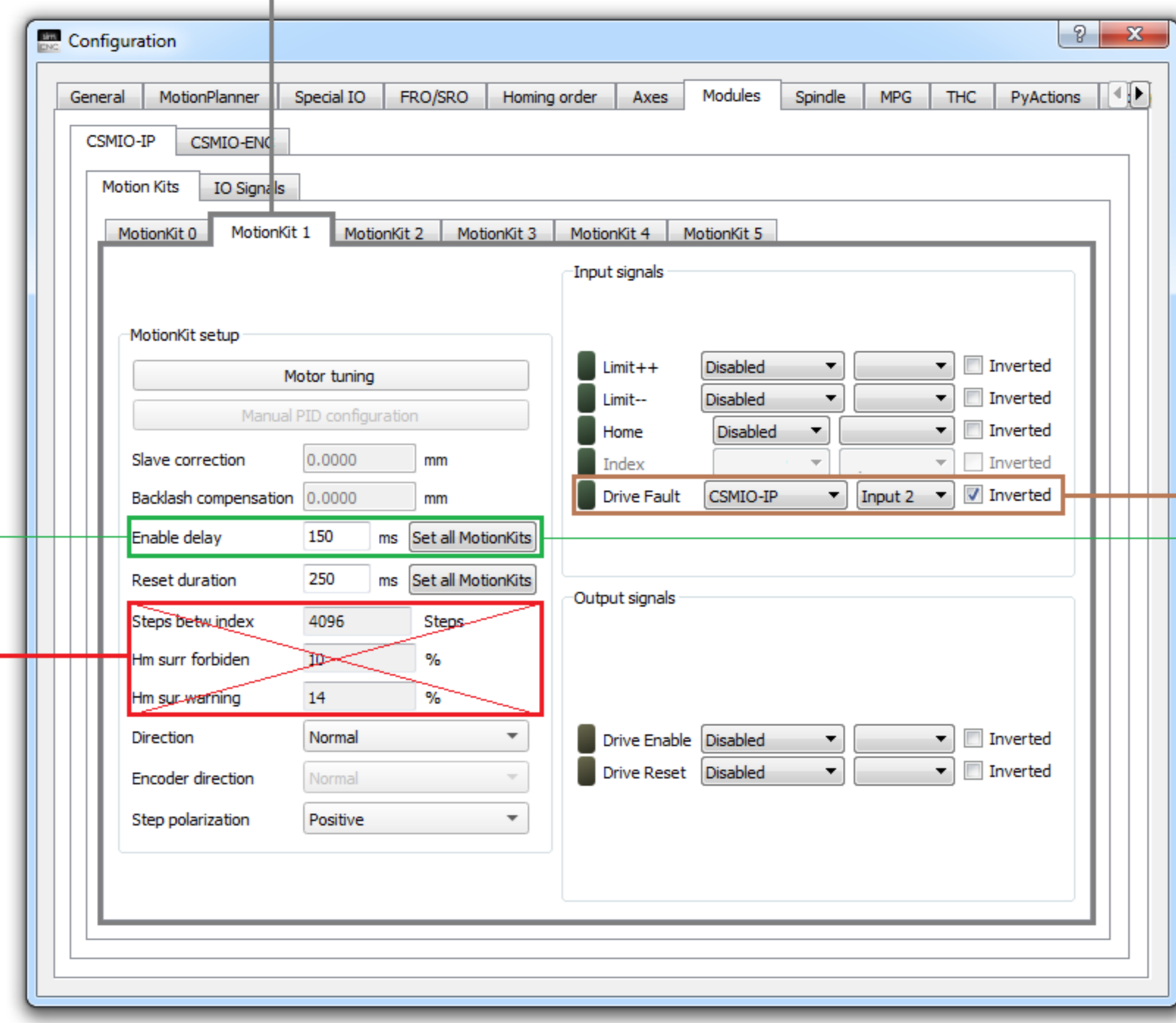
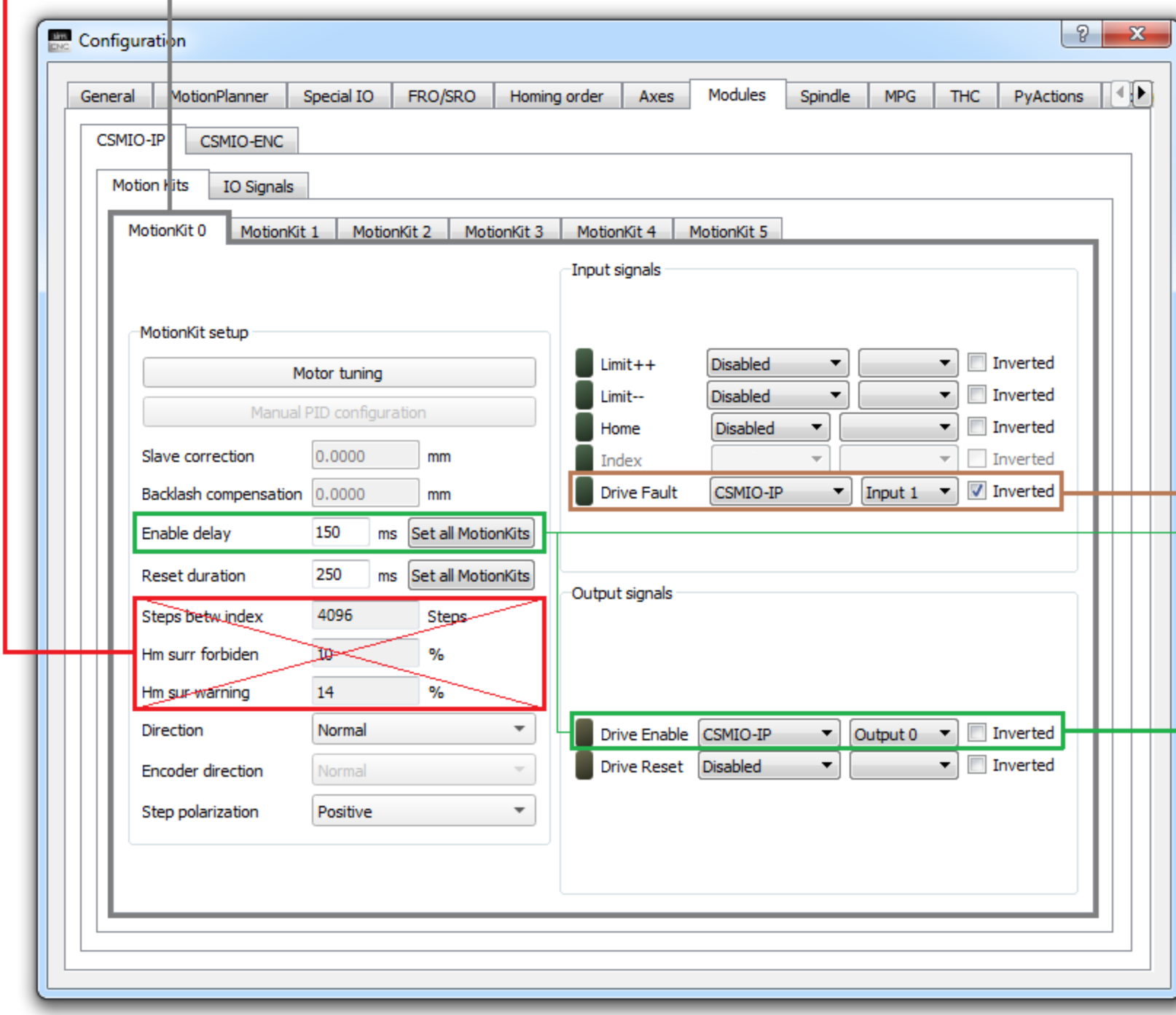
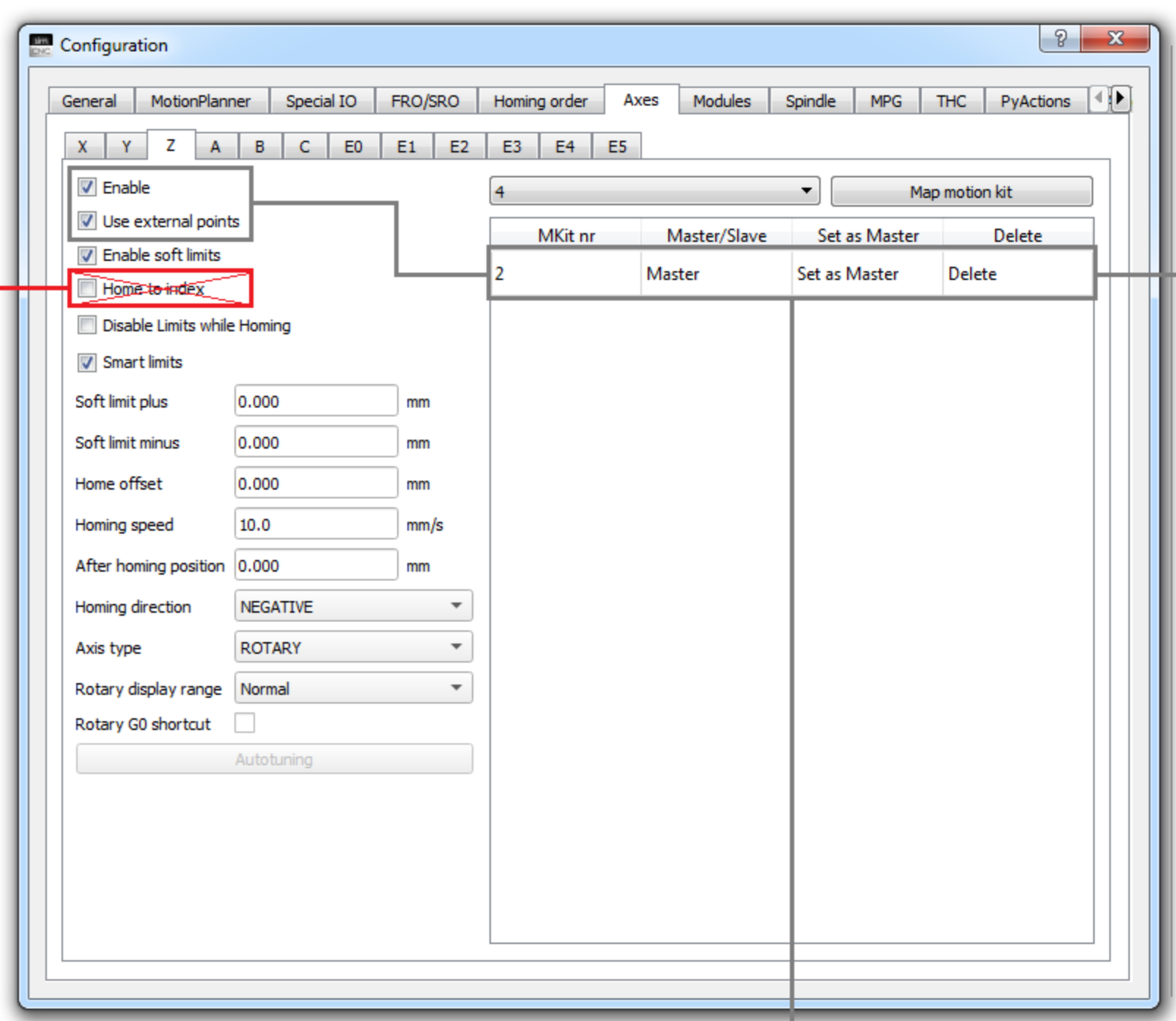


Stepper drives do not support the INDEX signal



Stepper drives do not support the INDEX signal



CSMIO/IP-S

Digital inputs connector (0-15)

PIN number	Description
1	Input 0 (+)
14	Input 1 (+)
2	Input 2 (+)
15	Input 3 (+)
5	Inputs 0-7 (-)

STEP/DIR controlling signals connector

PIN number	Description
14	DIR[0]-
1	DIR[0]+
15	STEP[0]-
2	STEP[0]+

Digital outputs connector (0-15)

PIN number	Details
1	24V power supply for 0-3 outputs
2	Output 0
14	Power supply 0V for 0-3 outputs

STEP/DIR controlling signals connector

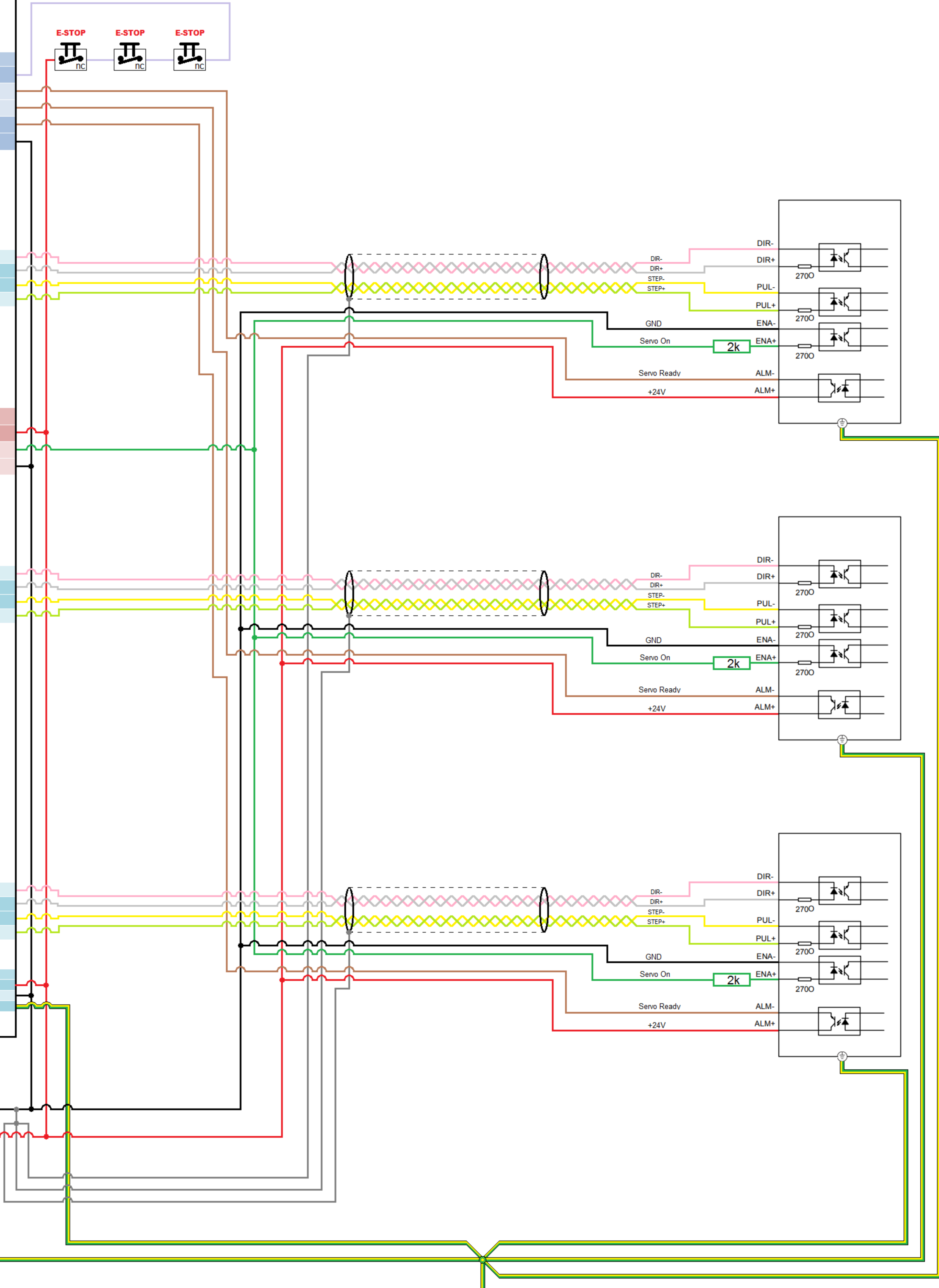
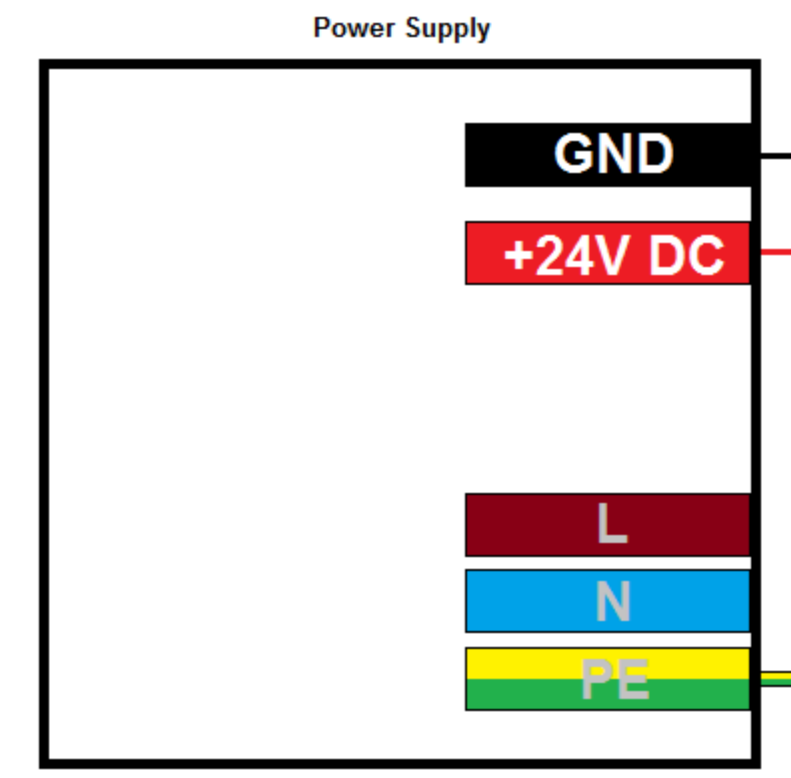
PIN number	Description
16	DIR[1]-
3	DIR[1]+
17	STEP[1]-
4	STEP[1]+

STEP/DIR controlling signals connector

PIN number	Description
18	DIR[2]-
5	DIR[2]+
19	STEP[2]-
6	STEP[2]+

Power connector

Pin number	Description
1	Power = 24V DC
2	GND
3	ground



Earth PE

Earth Bars
Listwa uziemiająca

