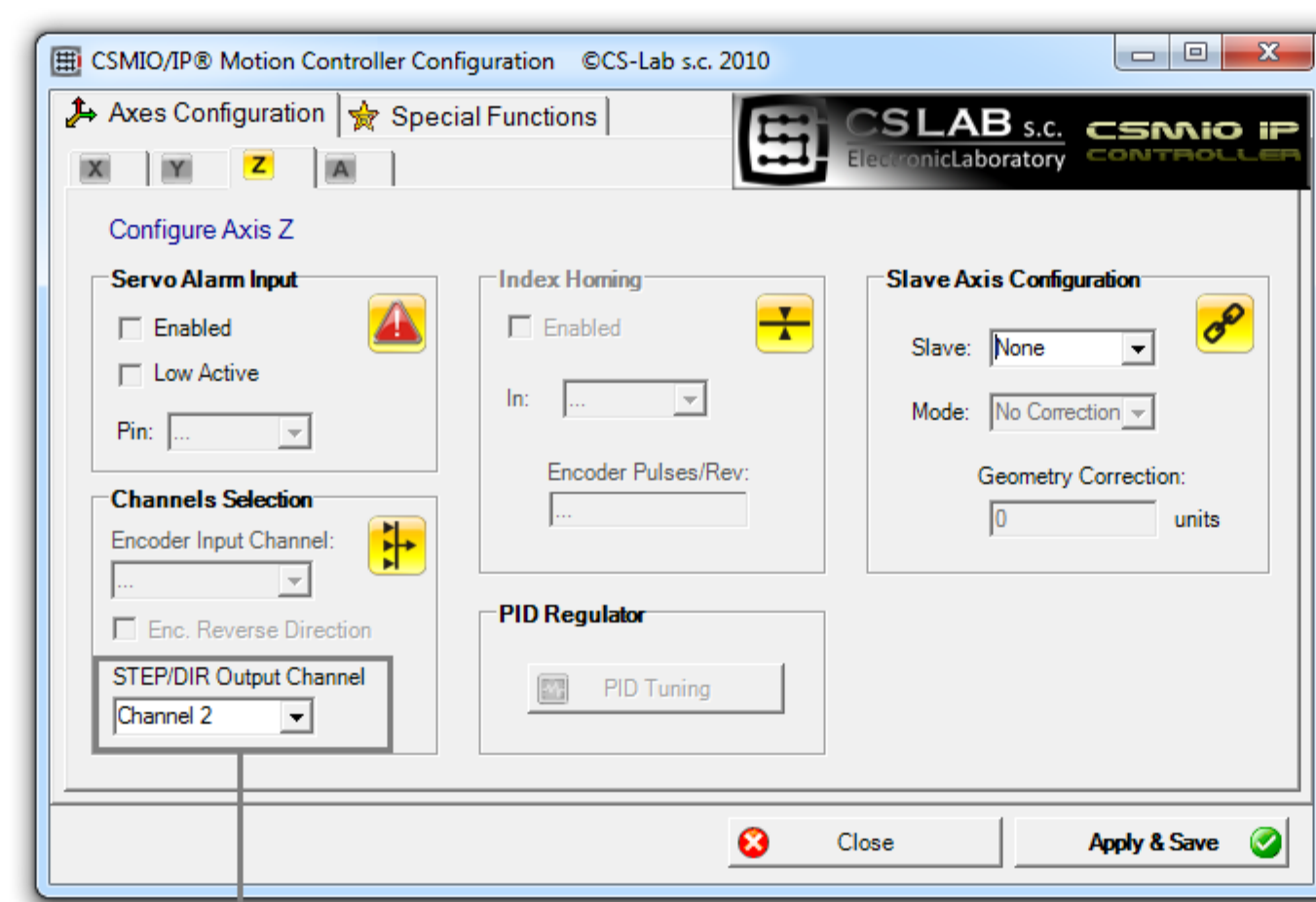
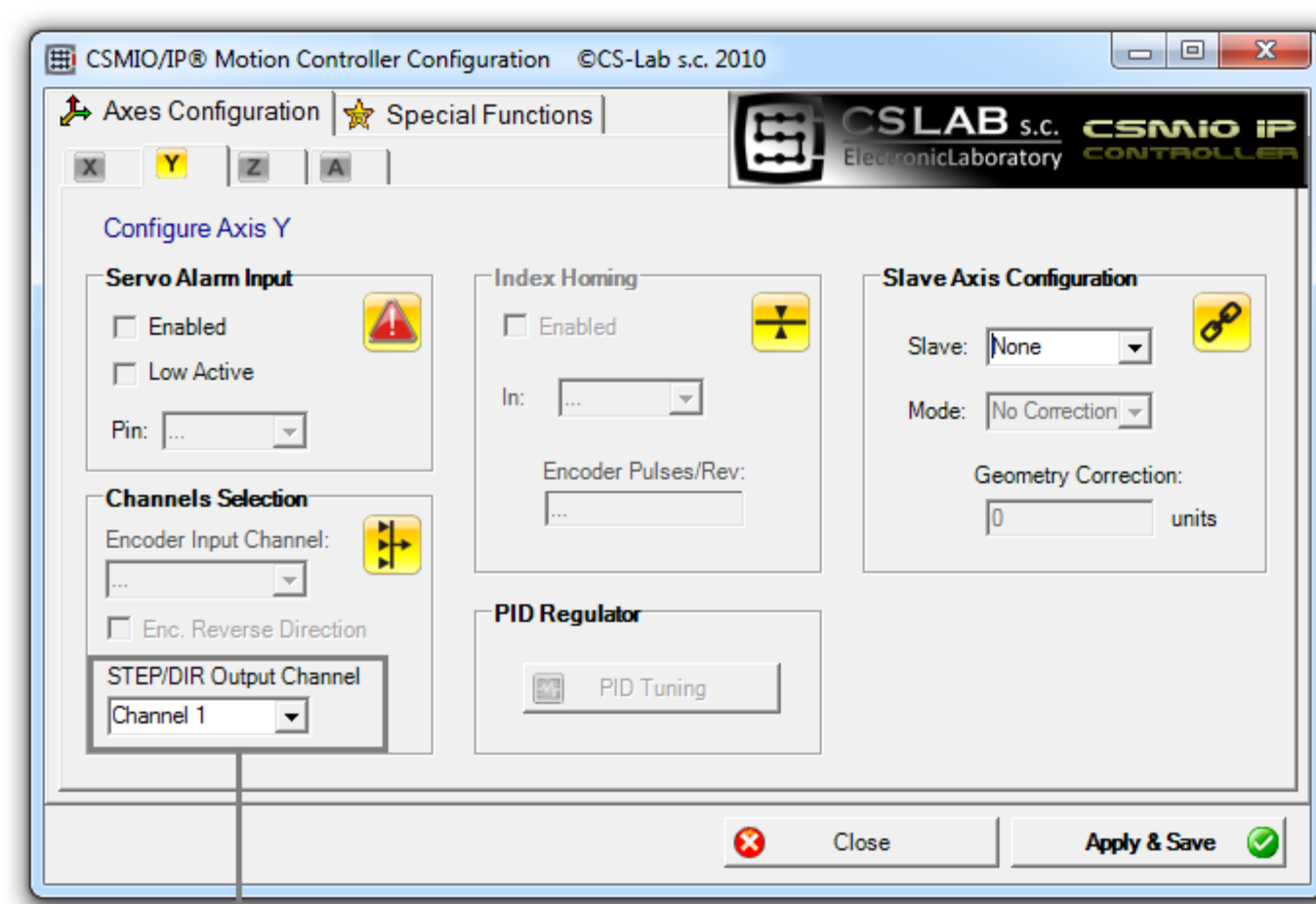
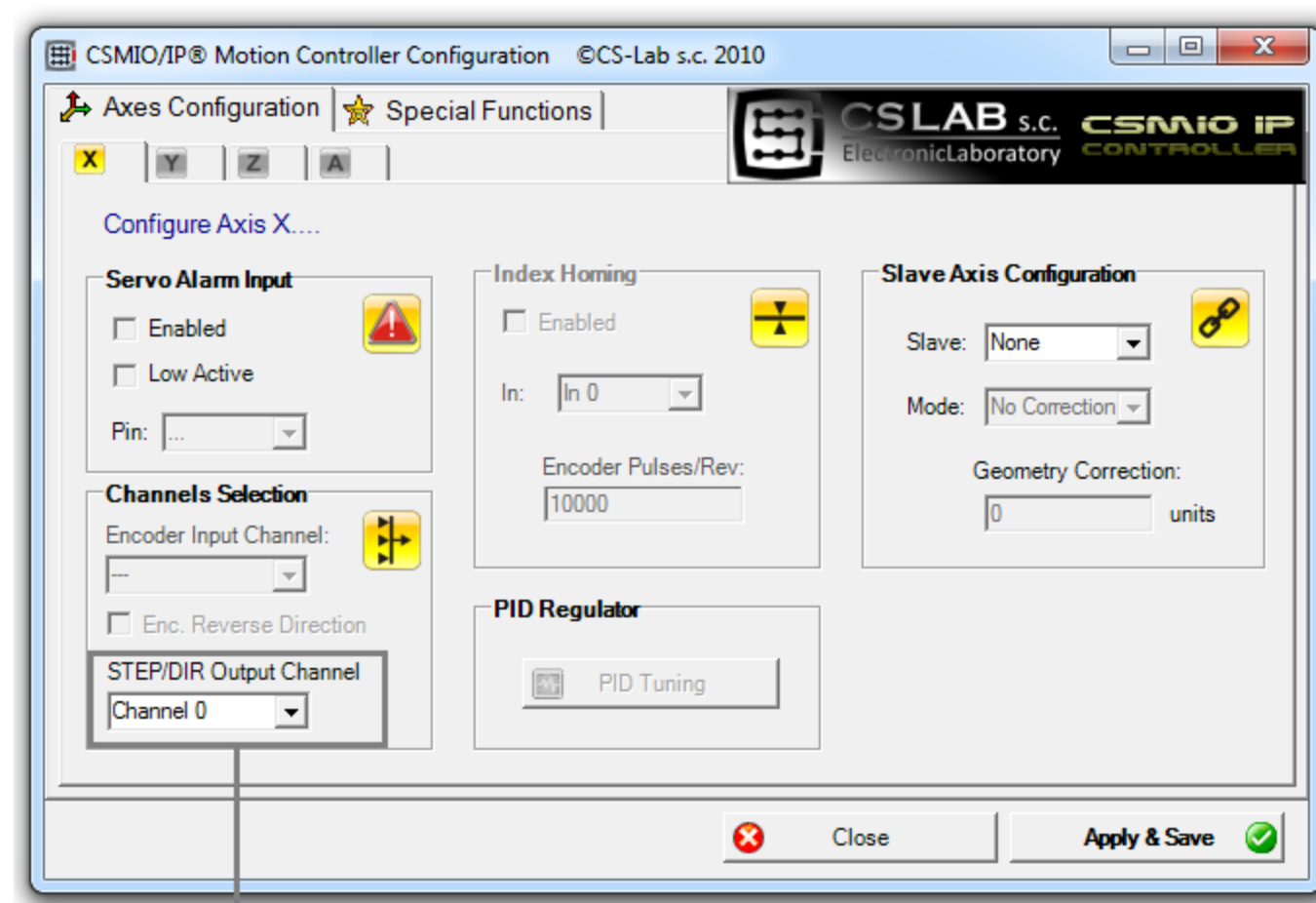


Mach3



Engine Configuration... Ports & Pins

Port Setup and Axis Selection | Motor Outputs | Input Signals | Output Signals | Encoder/MPGs | Spindle Setup | Mill Options

Signal	Enabled	Port #	Pin Number	Active Low	Emulated	HotKey
Probe	✓	1	0	✓	0	0
Index	✓	1	0	✓	0	0
Limit Overd	✓	1	0	✓	0	0
Estop	✓	10	0	✓	0	0
THC On	✓	1	0	✓	0	0
THC Up	✓	1	0	✓	0	0
THC Down	✓	1	0	✓	0	0
DEM Trig #1	✓	1	0	✓	0	0
DEM Trig #2	✓	1	0	✓	0	0

Pin 10-13 and 15 are inputs. Only these 5 pin numbers may be used on this screen.

Automated Setup of Inputs

OK Anuluj Zakończ

